

Management of Depression in Patients With Cancer: A Clinical Practice Guideline

Madeline Li, MD, PhD, Erin B. Kennedy, MHSc, Nelson Byrne, PhD, Caroline Gérin-Lajoie, MD, Mark R. Katz, MD, Homa Keshavarz, PhD, Scott Sellick, PhD, and Esther Green, RN, MSc

Princess Margaret Cancer Centre, University Health Network; Cancer Care Ontario; and University of Toronto, Toronto; Cancer Care Ontario Program in Evidence-Based Care, McMaster University, Hamilton; Trillium Health Partners, Mississauga Halton-Central West Regional Cancer Program, Mississauga; Ottawa Hospital Cancer Centre, Ottawa; Stronach Regional Cancer Centre and Southlake Regional Health Centre, Newmarket; and Thunder Bay Regional Health Sciences Centre, Thunder Bay, Ontario, Canada

Abstract

Purpose

This report updates the Cancer Care Ontario Program in Evidence-Based Care guideline for the management of depression in adult patients with cancer. This guideline covers pharmacologic, psychological, and collaborative care interventions, with a focus on integrating practical management tools to assist clinicians in delivering appropriate treatments for depression in patients with cancer.

Methods

Recommendations were developed by synthesizing information from extant guidelines and reviews and searching for randomized controlled trials from the date of database inception (1964 for MEDLINE and 1974 for EMBASE) to January 2015. Quality assessment of guidelines and systematic reviews were conducted by using the Appraisal of Guidelines for Research and Evaluation II (AGREE II), Assessment of Multiple Systematic Reviews (AMSTAR), and Cochrane Risk of Bias tools. Final recommendations were developed through a standardized Program in Evidence-Based Care multidisciplinary expert and knowledge user review process.

Results

Two high-quality relevant clinical practice guidelines, eight pharmacologic trials, nine psychological trials, and eight collaborative care intervention trials composed the evidence base upon which the recommendations were developed. Eight specific recommendations were made to establish a standard of care for the management of depression in patients with cancer. The recommendations and practical management tools were reviewed as being well organized and helpful, although systemic barriers to implementation were identified.

Conclusion

This updated guideline supports the previous general recommendation that patients with cancer who have depression may benefit from psychological and/or pharmacologic interventions, without evidence for the superiority of any specific treatment over another. New recommendations for a collaborative care model that incorporates a stepped care approach suggest that multidisciplinary mental health care restructuring may be required for optimal management of depression.

ASSOCIATED CONTENT



Data Supplement DOI: [10.1200/JOP.2016.011072](https://doi.org/10.1200/JOP.2016.011072)



DOI: [10.1200/JOP.2016.011072](https://doi.org/10.1200/JOP.2016.011072); published online ahead of print at jop.ascopubs.org on July 5, 2016.

INTRODUCTION

Depressive disorders are a significant comorbidity in cancer, with an estimated prevalence of major depression in more than 16% of patients with cancer, and minor depressive disorders, including dysthymia and adjustment disorders, reported in up to 22% of patients with cancer,¹ although prevalence varies widely with cancer type, treatment phase, and method of diagnosis.² Depression has been associated with more prolonged hospital stays, increased physical distress,³ poorer treatment compliance,⁴ lower quality of life,⁵ and increased desire for hastened death.⁶ More severe depression in cancer has also been shown to be a risk factor for death, independent of medical variables.⁷ However, as with other medical illnesses, the mediating mechanisms are unknown, and evidence that treatment of depression improves survival rates is lacking.⁸

The literature on treating depression in cancer presents many challenges, including the diagnostic complexity across this severity continuum, in which the clinician must distinguish physical symptoms of cancer from neurovegetative symptoms of depression, existential distress and grief from emotional and cognitive symptoms of depression, functional impairment from decreased activities as a result of anhedonia, and rational thoughts of death from suicidality. Treatment complexity is further compounded by medical and psychosocial factors, such as pain or inadequate social supports that contribute to depression and often need to be addressed before or concurrently with treatment for depressive symptoms. Clinicians must also consider detrimental adverse effects from pharmacotherapy, adverse drug interactions, and treatment compliance issues unique to the cancer context. Practice guidelines on the management of depression in cancer have been based on extrapolation from evidence on the treatment of depression in populations without cancer and limited to general statements on the overall effectiveness of antidepressants and psychological therapies, with few specific recommendations to guide practice for depression in patients with cancer.

This update to a previous Cancer Care Ontario Program in Evidence-Based Care (PEBC) guideline⁹ presents recommendations for management of depression in adult patients with cancer who are at any stage in their treatment and have also been diagnosed with a major depressive disorder on the basis of a structured diagnostic interview, or who have a suspected depressive disorder because they met a threshold on a validated depression rating scale. It incorporates the most recently published literature and includes, for the first time, recommendations based on newer studies of collaborative

care interventions, and it integrates practical management tools to assist clinicians in selecting appropriate specific treatments for depression in patients with cancer. This guideline was based on the results of a systematic review that explored this clinical research question: What is the efficacy of treatment (pharmacologic and/or psychological) for depression in adult patients with cancer?

GUIDELINE DEVELOPMENT METHODS

Literature Search Strategy and Quality Assessment

The working group, which consisted of individuals with expertise in nursing, health research methodology, psychiatry, and psychology, carried out a systematic review of Web sites of guideline developers, relevant cancer agencies, and MEDLINE and EMBASE from January 2005 to January 2015 using search terms related to depression and cancer. English language systematic reviews of randomized controlled trials (RCTs) or individual RCTs that reported at least one of the primary outcomes of interest were eligible for inclusion. Guideline quality was assessed with the Appraisal of Guidelines for Research and Evaluation II (AGREE II) instrument.¹⁰ Systematic reviews were assessed for quality by using the Assessment of Multiple Systematic Reviews (AMSTAR) tool,¹¹ and quality was assessed by using the Cochrane Risk of Bias tool and other quality indicators.¹²

Literature search results

The literature search located two relevant clinical practice guidelines that scored well on the AGREE II instrument.^{13,14} These guidelines were based on systematic reviews that scored highly on the AMSTAR tool. Twenty-five RCTs from database inception (1964 for MEDLINE and 1974 for EMBASE) to January 2015 met the inclusion criteria and composed the evidence base. Studies were categorized as pharmacologic interventions (n = 8), psychological interventions (n = 9), or collaborative care interventions (n = 8).

Synthesis of Evidence and Development of Recommendations

Data were extracted by a project methodologist (E.B.K. or H.K.) and verified by a project research assistant. A summary of the evidence base appears in [Table 1](#), and detailed results of the systematic review and meta-analyses will be published separately (Li, manuscript submitted for publication). High-quality evidence was found for collaborative care interventions because

Table 1. Summary of Key Evidence for Recommendations 1 to 8

Recommendation	Evidence Base	Level of Evidence*	Strength of Consensus
1. Screening of patients with cancer for distress or depression	Screening for Distress, the 6th Vital Sign, ¹⁵⁻²¹ (literature not systematically reviewed).	II	High
2. General management principles	Two CPGs ^{13,14} (literature not systematically reviewed)	IV	High
3. Pharmacologic or psychological/psychosocial interventions	Meta-analysis of eight pharmacologic ²²⁻²⁹ and nine psychological therapy RCTs ³⁰⁻³⁸ (Li, manuscript submitted for publication), two CPGs ^{13,14}	I	High
4. Depression severity and a stepped care approach	One CPG ¹³	IV	High
5. Collaborative care interventions	Meta-analysis of results of four RCTs ³⁹⁻⁴⁶ (ref to original meta-analysis to be added)	I	Moderate
6. Specialist referral	Two CPGs ^{13,14}	IV	High
7. Selection of psychological therapies	One CPG and relevant systematic reviews ^{13,14,47,48}	I	High
8. Use of antidepressant medication	One CPG ¹³ and relevant systematic reviews ^{47,49-54}	I	High

Abbreviations: CPG, clinical practice guideline; RCT, randomized controlled trial.

*According to the Canadian Network for Mood and Anxiety Treatments levels of evidence: I, at least two placebo-controlled RCTs and/or meta-analysis; II, at least one RCT with placebo or active comparison group; III, uncontrolled trial; IV, anecdotal reports or expert opinion.

of the larger sample sizes for their RCTs, larger effect sizes, and consistency of results. Lower-quality evidence was found for studies of pharmacologic and psychological interventions because the studies had smaller sample sizes, risk of bias because of lack of blinding, and heterogeneity in interventions and methods of measuring outcomes. Consensus-based recommendations were largely based on low-quality evidence; however, the consensus for these recommendations was high, given their low potential for harm and perceived high potential for benefit. There was a high level of consensus among the working group members for other recommendations, except for collaborative care, which had a moderate level of consensus because of concerns about the feasibility of implementation, given that it would require a substantial reorganization of care delivery. The included Practical Tools (Data Supplement) are based on the consensus opinion of the guideline development group.

Internal Review

The recommendations draft was circulated to a nine-person expert panel that included individuals with expertise in psychology (two), psychiatry (one), nursing and/or psychosocial oncology (two), or service delivery (four). Seven respondents voted to approve the document, and responses were not received from two members of the group. The report was also

circulated to the PEBC Report Approval Panel, a three-person panel with clinical, methodologic, and oncology expertise, who approved the document with minor suggested revisions.

External Review

The external review process included a targeted peer review by three clinical and/or methodologic experts to obtain direct feedback on the draft report and a professional consultation that was intended to facilitate dissemination of the final guidance to practitioners.

Targeted peer review

During the development process, three clinical and/or methodologic experts identified by the working group were approached, and they agreed to participate. They were located in Canada, the United Kingdom, and Australia. The draft report and an evaluation questionnaire were sent via e-mail on January 29, 2015. Written comments were invited. The working group reviewed the results and made changes to the draft guideline.

Professional consultation

The professional consultation, conducted between February 3, 2015, and March 2, 2015, asked potential users of the guideline to rate the quality of the guideline, whether they would use and/or

recommend it, whether they perceived barriers or enablers to implementation, and for other comments. Nurse practitioners, nurses, primary care physicians, psychologists, psychiatrists, members of relevant professional organizations, and those with an interest in palliative care were contacted by e-mail to inform them of the survey. Comments and feedback were obtained from 51 practitioners that included family practitioners, nurses, nurse practitioners or advanced practice nurses, a psychologist, a palliative care physician, a program manager, and representatives from professional organizations. Several respondents commented that the guideline was well organized and that the algorithm (Fig 1) was helpful. Some respondents commented on barriers to implementation, including the lower level of evidence for pharmacologic and psychological therapy options, and they also mentioned implementation issues related to inadequate resources.

RECOMMENDATIONS, KEY EVIDENCE, AND QUALIFYING STATEMENTS

The eight recommendations developed in this guideline have been synthesized into a quick reference guide for the initial

management of depression in patients with cancer (Fig 1). This management algorithm provides a general approach and practical guidance tool for health care providers treating patients with cancer who present with a depressive disorder. Most of the steps in the algorithm are described in more detail within the recommendations. A summary of the evidence base, level of evidence, and strength of consensus is provided in Table 1.

Recommendation 1. Screening of Patients With Cancer for Depression

Patients with cancer should be screened for depression. Many cancer programs incorporate depression screening into Screening for Distress programs. A clear diagnosis of depression is required to guide treatment. The psychological features that distinguish the continuum of depressive symptoms, ranging from normal sadness to subthreshold depression to major depression, are described in the Data Supplement. To improve health outcomes, screening must be linked to effective interventions.⁵⁵

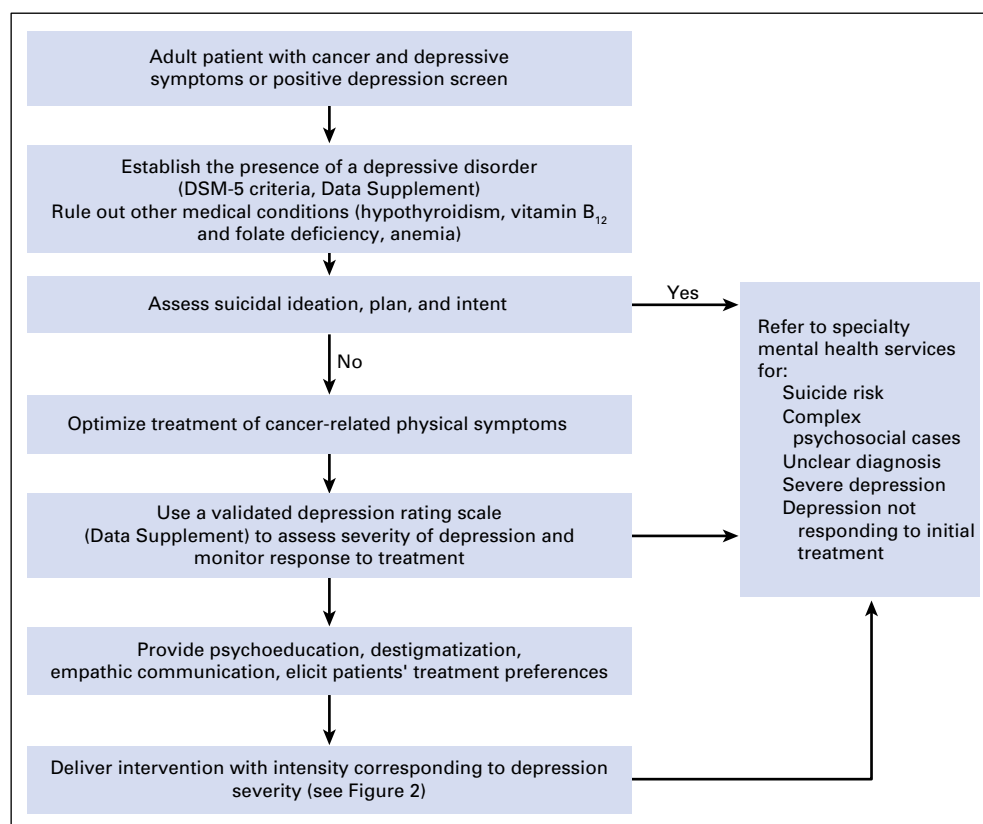


FIG 1. Quick reference algorithm for the initial management of depression in patients with cancer. DSM, *Diagnostic and Statistical Manual of Mental Disorders*.

Qualifying statement for Recommendation 1

The evidence base for the effectiveness of depression screening in reducing depression outcomes in cancer is lacking and is a topic of much debate in the field of distress screening.^{13,14}

Review of this literature is beyond the scope of this guideline; however, it is the opinion of the members of the working group that lack of evidence is not equivalent to lack of effectiveness.

Recommendation 2. General Management Principles

The following general management principles are recommended:

- Provide psychoeducation about the nature of depression to patients with cancer and consider providing handouts such as those published by the National Cancer Institute.⁵⁶
- Inform patients about the impact of depression on cancer outcomes, including reduced quality of life, intensification of physical symptoms, longer hospital stays, and reduced survival rates.
- Destigmatize clinical depression in cancer by framing it as a serious problem requiring treatment rather than as a personal weakness or failure to cope.
- Investigate medical contributors to depression such as hypothyroidism, or vitamin B12, folate, or iron deficiency.
- Assess and optimize cancer-related physical symptom control.
- Encourage family members' involvement and education, communication with family members regarding prognosis, and resolution of problems within the support network.
- Discuss treatment options, attending to patients' preferences and previous treatment experiences.

Examples of validated scales can be found in the Data Supplement.

Recommendation 3. Pharmacologic or Psychological/Psychosocial Interventions

Patients with cancer who are diagnosed with major depression may benefit from pharmacologic or psychosocial interventions either alone or in combination (Li, manuscript submitted for publication).

Qualifying statements for Recommendation 3

- Psychosocial and pharmacologic interventions for moderate depression are equally effective.⁵⁷
- Pharmacologic interventions are most effective for more severe depression.⁵⁸

- Combined psychosocial and pharmacologic interventions should be considered for severe depression in patients with cancer.⁵⁹

Recommendation 4. Depression Severity and a Stepped Care Approach

Interventions for depression in patients with cancer should be delivered according to a stepped care model. This involves assessment of the severity of depression for each patient (Data Supplement), provision of support and psychoeducation to all patients, and delivery of lower-intensity interventions for persistent subthreshold and mild-to-moderate depression followed by progression to higher-intensity interventions for nonresponsive or moderate-to-severe depression (Fig 2). Low-intensity psychosocial interventions include structured group physical activity programs, group-based peer support or self-help programs, and guided self-help programs based on cognitive behavioral therapy (CBT), behavioral activation, or problem-solving techniques. High-intensity psychosocial interventions include individual or group CBT, behavioral couples' therapy, and individual or group supportive-expressive psychotherapies.

Qualifying statement for Recommendation 4

Antidepressant medication should be reserved for moderate-to-severe depression but can be considered for subthreshold or mild depressive symptoms that persist after initial interventions or that interfere with engagement in cancer treatment.

Recommendation 5. Collaborative Care Interventions

Collaborative care interventions should be considered for patients with cancer who are diagnosed with major depression. Collaborative care involves active collaboration between the oncologist or primary care provider and a patient care manager (nurse, social worker, psychologist), with pharmacologic treatment supervised by a consulting psychiatrist as needed. The care manager provides psychoeducation, delivers structured psychosocial interventions such as behavioral activation or problem-solving therapy, and monitors progress. Weekly case review meetings are held to adjust treatment plans for inadequate improvement. These are multicomponent interventions that can be offered at a range of intensity levels, depending on the presentation of the patient and local resources. The interventions typically include measurement-based care and involve increases in the level or intensity

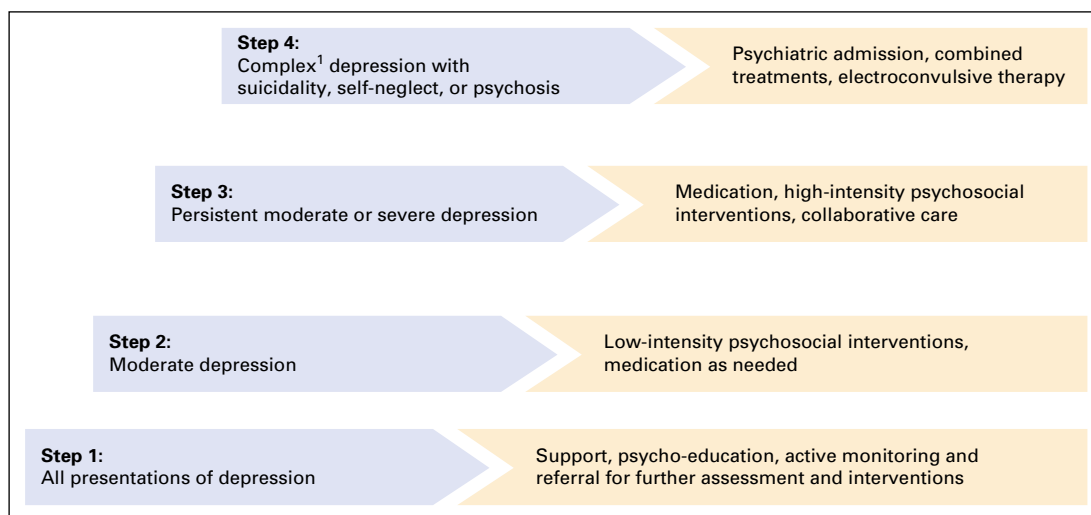


FIG 2. Delivery of intervention corresponding to the Stepped Care Model. *Complex depression includes depression that shows an inadequate response to multiple treatments, is complicated by psychotic symptoms, and/or is associated with significant psychiatric comorbidity or psychosocial factors. The stepped care algorithm was adapted from the National Institute for Health and Clinical Care Excellence (NICE) CG91, p.110.¹³

of intervention as needed according to the principles of stepped care.

Qualifying statements for Recommendation 5

- Within a stepped care approach, collaborative care interventions may be most appropriate for patients with cancer and with subthreshold or mild depression persisting after other interventions or with moderate-to-severe depression.
- Implementation of a collaborative care model may require significant reorganization of mental health care service delivery in cancer treatment facilities. Details regarding implementation of a collaborative care model of service delivery are outside the scope of this guideline, but information can be obtained at <http://www.teamcarehealth.org/> or <http://impact-uw.org/>

Recommendation 6. Specialist Referral

In a stepped care model, referral to psychosocial specialists, including mental health specialists, should occur in the following instances:

- When there is risk of harm
- In complex psychosocial cases
- When the patient experiences persistent symptoms after initial intervention
- When diagnosis is unclear

- For delivery of specific psychotherapies that require specialized training

Recommendation 7. Selection of Psychological Therapies

Because there is insufficient evidence for superiority of one modality over another, consensus-based opinion of the members of the working group is that selection of psychological therapy should be based on patient factors and local resource availability.

- Among patients with cancer who present with depressive symptoms, most have mild-to-moderate depression. In the stepped care model, it is recommended that low-intensity interventions (eg, self-help materials such as books or computer programs) be considered first for mild-to-moderate depression.¹³
- Psychological therapies should be delivered by health care professionals competent in the modality, but non-mental health specialists can be trained in basic psychosocial interventions.

Examples of psychological therapies and further details on these therapies are provided in the Data Supplement.

Qualifying statements for Recommendation 7

- Delivery of therapy:
 - Empathic communication, psychoeducation, problem-solving, and behavioral activation are therapeutic

techniques that may be delivered by trained health care professionals.

- Supportive-expressive and structured psychotherapies (eg, CBT, interpersonal therapy, psychodynamic therapy) require specially trained therapists.
- Patient factors that guide selection:
 - CBT may be useful for patients who want a symptom-based approach.
 - Supportive-expressive therapies may be of value with more psychologically minded patients (ie, patients with the capacity for self-reflection and introspection and the ability to gain insight into their motivations and behaviors).
 - Individual therapies may be more practical for patients who are in the palliative phase.

Recommendation 8. Use of Antidepressant Medication

Do not use antidepressants routinely to treat subthreshold depressive symptoms or mild depression because of the higher risk-benefit ratio at this level of depression severity. Antidepressant medication should be considered first for severe depression. The Data Supplement provides practical guidance on selecting commonly used antidepressants for patients with cancer, including further guidance on antidepressant prescribing practices, classes of antidepressants for use in patients with cancer, and information on antidepressant drug interactions. In clinical practice, selective serotonin reuptake inhibitors such as citalopram or escitalopram should be the first resort because they have the best tolerability and the least potential for drug interactions.

Qualifying statements for Recommendation 8

- Despite the limitations of the evidence base, the members of the working group recognize that both antidepressants and antipsychotic agents are widely prescribed for patients with cancer⁶⁰; this is especially the case for patients with advanced illness.⁶¹ Only case series and open trials have been published for newer antidepressants, such as escitalopram, citalopram, venlafaxine, desvenlafaxine, mirtazapine, bupropion, and duloxetine, which are routinely used in patients with cancer. Indications for these agents include not only depression but also anxiety and hot flashes in the case of selective serotonin reuptake inhibitors and serotonin-norepinephrine reuptake inhibitors,⁶² neuropathic pain with serotonin-norepinephrine reuptake inhibitors and

tricyclic antidepressants,⁶³ and nausea, sleep disturbances, and appetite enhancement with mirtazapine and atypical antipsychotics.⁶⁴

- The members of the working group discussed concerns about interactions between tamoxifen and antidepressants that inhibit cytochrome P450 2D6 (CYP2D6), thus reducing the conversion of tamoxifen to the active metabolite endoxifen and increasing the risks of recurrence and mortality. However, meta-analyses have suggested that the reductions in endoxifen do not translate into increased breast cancer recurrence rates or mortality rates, possibly because the therapeutic dosing of tamoxifen fully saturates the estrogen receptor.^{65,66} Existing recommendations are conservative and caution against using potent CYP2D6 inhibitors (eg, paroxetine, fluoxetine, high-dose sertraline, bupropion) with tamoxifen. Although these antidepressants are not recommended as first-line agents, clinical judgment can be exercised in their use with patients for whom safer alternatives are not an option, after discussion with the treating oncologist has occurred and informed consent has been obtained. More potent CYP2D6 inhibitors may be safer to use in postmenopausal women or women with a known extensive metabolizer CYP2D6 genotype.⁶⁷ When possible, it is prudent to prefer antidepressants with low CYP2D6 inhibition (eg, citalopram/escitalopram, venlafaxine/desvenlafaxine, low-dose sertraline [< 100 to 150 mg/day] or mirtazapine) as first-line agents.

DISCUSSION

This guideline does not include recommendations for the management of depressive symptoms in the normative or nonpathologic range of severity. Studies that address this level of depression have been highly heterogeneous, group-as-a-whole studies and were beyond the scope of this systematic review. Such studies have been extensively reviewed previously,⁶⁴ with management recommendations provided in other guidelines.⁶⁸

Recommendations for the management of threshold depressive disorders are integrated into the quick reference guide provided in [Figure 1](#). This management algorithm includes steps not fully articulated in these recommendations because they represent accepted standard of care and have been extensively reviewed elsewhere.⁶⁹ For example, assessment for suicidality requires either direct inquiry or the use of

depression rating scales that contain items assessing suicidal ideation (eg, Patient Health Questionnaire 9, Beck Depression Inventory II). Further guidance on the management of suicidal ideation in patients with cancer is available through the International Psycho-Oncology Society's core curriculum Web-cast series.⁷⁰ Empathic communication by health care providers is an important component of management at all levels of depression severity in patients with cancer. The significance of good patient-provider communication has been extensively reviewed in other guidelines,⁷¹ and excellent online training resources for cancer care providers are available.⁷² More specific management tools, including strategies for the management of depression in patients who do not respond to initial treatments, are provided in Appendices 1 to 7 in the Data Supplement. These tools were developed according to consensus by the members of the working group. The working group for this guideline did not include patient representatives. For future updates of this guideline, it would be advisable to include a patient representative in the working group in addition to clinical and methodologic experts.

There has been a dearth of new and high-quality individual pharmacotherapy or psychotherapy research in this field since the previous version of this guideline was published.⁹ Investigators who conduct antidepressant trials in patients with cancer have reported lack of success in recruiting subjects⁷³ and numerous potential barriers to study completion, including patient and clinician refusal to consider placebo trials for medications that are already in widespread clinical use.⁷³ As a result, the literature continues to accumulate modestly powered open-label nonrandomized pilot studies. Psychological intervention studies are similarly hampered by difficulties in establishing appropriate nonintervention control groups in a population with both depression and cancer and strong placebo effects in comparative control groups.

The recommendations in this updated guideline imply a significant restructuring of care delivery for patients with cancer who are experiencing depression, including routine screening to improve access to services, intervention based on a stepped care approach, delivered within a multidisciplinary collaborative care model, and ongoing monitoring to ensure timely intervention. This level of reorganization may be a significant challenge for institutions; practitioners who responded to our feedback survey reported that barriers to implementation included the lower level of evidence for pharmacologic and psychological therapy options and inadequate resources to fully implement organizational

components of the recommendations. A renewed research agenda to strengthen the evidence base around these specific components is urgently needed to justify the investment of resources for this reorganization. Effective management of depression in cancer is required to optimize patient quality of life, improve cancer outcomes, and support a person-centered model of cancer care delivery. **JOP**

Acknowledgment

Supported by the Program in Evidence-Based Care of Cancer Care Ontario, which is editorially independent of the Ontario Ministry of Health and Long-Term Care.

Authors' Disclosures of Potential Conflicts of Interest

Disclosures provided by the authors are available with this article at jop.ascopubs.org.

Author Contributions

Conception and design: All authors

Collection and assembly of data: Madeline Li, Erin B. Kennedy, Mark R. Katz, Homa Keshavarz

Data analysis and interpretation: Madeline Li, Erin B. Kennedy, Nelson Byrne, Caroline Gérin-Lajoie, Mark R. Katz, Homa Keshavarz, Esther Green

Manuscript writing: All authors

Final approval of manuscript: All authors

Corresponding author: Madeline Li, MD, PhD, Cancer Care Ontario Program in Evidence-Based Care, McMaster University, Juravinski Site, G Wing, 2nd Floor, 711 Concession St, Hamilton, Ontario, Canada L8V 1C3; e-mail: ccopgi@mcmaster.ca

References

- Mitchell AJ, Chan M, Bhatti H, et al: Prevalence of depression, anxiety, and adjustment disorder in oncological, haematological, and palliative-care settings: A meta-analysis of 94 interview-based studies. *Lancet Oncol* 12:160-174, 2011
- Krebbler AM, Buffart LM, Kleijn G, et al: Prevalence of depression in cancer patients: A meta-analysis of diagnostic interviews and self-report instruments. *Psychooncology* 23:121-130, 2014
- Fitzgerald P, Lo C, Li M, et al: The relationship between depression and physical symptom burden in advanced cancer. *BMJ Support Palliat Care* 5: 381-388, 2015
- Colleoni M, Mandala M, Peruzzotti G, et al: Depression and degree of acceptance of adjuvant cytotoxic drugs. *Lancet* 356:1326-1327, 2000
- Grassi L, Indelli M, Marzola M, et al: Depressive symptoms and quality of life in home-care-assisted cancer patients. *J Pain Symptom Manage* 12:300-307, 1996
- Rodin G, Zimmermann C, Rydall A, et al: The desire for hastened death in patients with metastatic cancer. *J Pain Symptom Manage* 33:661-675, 2007
- Satin JR, Linden W, Phillips MJ: Depression as a predictor of disease progression and mortality in cancer patients: A meta-analysis. *Cancer* 115:5349-5361, 2009
- Schneider S, Moyer A: Depression as a predictor of disease progression and mortality in cancer patients: A meta-analysis. *Cancer* 116:3304, 2010
- Rodin G, Katz M, Lloyd N, et al: Treatment of depression in cancer patients. *Curr Oncol* 14:180-188, 2007
- Brouwers MC, Kho ME, Browman GP, et al: AGREE II: Advancing guideline development, reporting and evaluation in healthcare. *CMAJ* 182:E839-E842, 2010
- Shea BJ, Grimshaw JM, Wells GA, et al: Development of AMSTAR: A measurement tool to assess the methodological quality of systematic reviews. *BMC Med Res Methodol* 7:10, 2007
- Higgins JP, Altman DG, Gøtzsche PC, et al: The Cochrane Collaboration's tool for assessing risk of bias in randomised trials. *BMJ* 343:d5928, 2011

13. National Institute for Health and Care Excellence (NICE): Depression in adults with a chronic physical health problem. NICE guidelines (CG91), 2009. <http://www.nice.org.uk/nicemedia/pdf/CG91FullGuideline.pdf>
14. Rayner L, Higginson IJ, Price A, et al: The Management of Depression in Palliative Care: European Clinical Guidelines. European Palliative Care Research Collaborative 2010. <http://www.eprc.org/getpublication2.php?id=6VW4bQY9JujQVGSitDs6>
15. Bultz BD, Johansen C: Screening for distress, the 6th vital sign: Where are we, and where are we going? *Psychooncology* 20:569-571, 2011
16. National Institute for Health and Care Excellence (NICE): Improving supportive and palliative care for adults with cancer. NICE guidelines (CSG4), 2004. <https://www.nice.org.uk/guidance/csg4>
17. National Comprehensive Cancer Network (NCCN): Distress Management Guideline, 2014. http://www.nccn.org/professionals/physician_gls/PDF/distress.pdf
18. Adler NE, Page AE (eds): *Cancer Care for the Whole Patient: Meeting Psychosocial Health Needs*. Washington, DC, National Academies Press, 2008
19. Canadian Association of Psychosocial Oncology (CAPO): Standards of psychosocial health services for persons with cancer and their families. 2010. <http://capo.ca/CAPOstandards.pdf>
20. Turnbull G, Baldassarre F, Brown P, et al: Psychosocial health care for cancer patients and their families. *Cancer Care Ontario Evidence-Based Series* 19-3. <https://www.cancercare.on.ca/common/pages/UserFile.aspx?fileid=83597>
21. Carlson LE, Groff SL, Maciejewski O, et al: Screening for distress in lung and breast cancer outpatients: A randomized controlled trial. *J Clin Oncol* 28:4884-4891, 2010
22. Costa D, Mogos I, Toma T: Efficacy and safety of mianserin in the treatment of depression of women with cancer. *Acta Psychiatr Scand Suppl* 320:85-92, 1985
23. Fisch MJ, Loehrer PJ, Kristeller J, et al: Fluoxetine versus placebo in advanced cancer outpatients: A double-blinded trial of the Hoosier Oncology Group. *J Clin Oncol* 21:1937-1943, 2003
24. Holland JC, Romano SJ, Heiligenstein JH, et al: A controlled trial of fluoxetine and desipramine in depressed women with advanced cancer. *Psychooncology* 7:291-300, 1998
25. Musselman DL, Somerset WI, Guo Y, et al: A double-blind, multicenter, parallel-group study of paroxetine, desipramine, or placebo in breast cancer patients (stages I, II, III, and IV) with major depression. *J Clin Psychiatry* 67:288-296, 2006
26. Ng CG, Boks MP, Roes KC, et al: Rapid response to methylphenidate as an add-on therapy to mirtazapine in the treatment of major depressive disorder in terminally ill cancer patients: A four-week, randomized, double-blinded, placebo-controlled study. *Eur Neuropsychopharmacol* 24:491-498, 2014
27. Pezzella G, Moslinger-Gehmayr R, Contu A: Treatment of depression in patients with breast cancer: A comparison between paroxetine and amitriptyline. *Breast Cancer Res Treat* 70:1-10, 2001
28. Razavi D, Allilaire JF, Smith M, et al: The effect of fluoxetine on anxiety and depression symptoms in cancer patients. *Acta Psychiatr Scand* 94:205-210, 1996
29. van Heeringen K, Zivkov M: Pharmacological treatment of depression in cancer patients. A placebo-controlled study of mianserin. *Br J Psychiatry* 169:440-443, 1996
30. Beutel ME, Weißflog G, Leuteritz K, et al: Efficacy of short-term psychodynamic psychotherapy (STPP) with depressed breast cancer patients: Results of a randomized controlled multicenter trial. *Ann Oncol* 25:378-384, 2014
31. Evans RL, Connis RT: Comparison of brief group therapies for depressed cancer patients receiving radiation treatment. *Public Health Rep* 110:306-311, 1995
32. Goerling U, Foerg A, Sander S, et al: The impact of short-term psycho-oncological interventions on the psychological outcome of cancer patients of a surgical-oncology department: A randomised controlled study. *Eur J Cancer* 47:2009-2014, 2011
33. Hopko DR, Armento ME, Robertson SM, et al: Brief behavioral activation and problem-solving therapy for depressed breast cancer patients: Randomized trial. *J Consult Clin Psychol* 79:834-849, 2011
34. Kangas M, Milross C, Taylor A, et al: A pilot randomized controlled trial of a brief early intervention for reducing posttraumatic stress disorder, anxiety and depressive symptoms in newly diagnosed head and neck cancer patients. *Psychooncology* 22:1665-1673, 2013
35. Nezu AM, Nezu CM, Felgoise SH, et al: Project Genesis: Assessing the efficacy of problem-solving therapy for distressed adult cancer patients. *J Consult Clin Psychol* 71:1036-1048, 2003
36. Qiu J, Chen W, Gao X, et al: A randomized controlled trial of group cognitive behavioral therapy for Chinese breast cancer patients with major depression. *J Psychosom Obstet Gynaecol* 34:60-67, 2013
37. Rodríguez Vega B, Palao A, Torres G, et al: Combined therapy versus usual care for the treatment of depression in oncologic patients: A randomized controlled trial. *Psychooncology* 20:943-952, 2011
38. Savard J, Simard S, Giguère I, et al: Randomized clinical trial on cognitive therapy for depression in women with metastatic breast cancer: Psychological and immunological effects. *Palliat Support Care* 4:219-237, 2006
39. Dwight-Johnson M, Ell K, Lee PJ: Can collaborative care address the needs of low-income Latinas with comorbid depression and cancer? Results from a randomized pilot study. *Psychosomatics* 46:224-232, 2005
40. Ell K, Xie B, Kapetanovic S, et al: One-year follow-up of collaborative depression care for low-income, predominantly Hispanic patients with cancer. *Psychiatr Serv* 62:162-170, 2011
41. Ell K, Xie B, Quon B, et al: Randomized controlled trial of collaborative care management of depression among low-income patients with cancer. *J Clin Oncol* 26:4488-4496, 2008
42. Fann JR, Fan MY, Unützer J: Improving primary care for older adults with cancer and depression. *J Gen Intern Med* 24:S417-S424, 2009
43. Kroenke K, Theobald D, Wu J, et al: Effect of telecare management on pain and depression in patients with cancer: A randomized trial. *JAMA* 304:163-171, 2010
44. Sharpe M, Walker J, Holm Hansen C, et al: Integrated collaborative care for comorbid major depression in patients with cancer (SMaRT Oncology-2): A multicentre randomised controlled effectiveness trial. *Lancet* 384:1099-1108, 2014
45. Strong V, Waters R, Hibberd C, et al: Management of depression for people with cancer (SMaRT Oncology 1): A randomised trial. *Lancet* 372:40-48, 2008
46. Walker J, Hansen CH, Martin P, et al: Integrated collaborative care for major depression comorbid with a poor prognosis cancer (SMaRT Oncology-3): A multicentre randomised controlled trial in patients with lung cancer. *Lancet Oncol* 15:1168-1176, 2014
47. Hart SL, Hoyt MA, Diefenbach M, et al: Meta-analysis of efficacy of interventions for elevated depressive symptoms in adults diagnosed with cancer. *J Natl Cancer Inst* 104:990-1004, 2012
48. van Straten A, Geraedts A, Verdonck-de Leeuw I, et al: Psychological treatment of depressive symptoms in patients with medical disorders: A meta-analysis. *J Psychosom Res* 69:23-32, 2010
49. Ostuzzi G, Benda L, Costa E, et al: Efficacy and acceptability of antidepressants on the continuum of depressive experiences in patients with cancer: Systematic review and meta-analysis. *Cancer Treat Rev* 41:714-724, 2015
50. Ostuzzi G, Matcham F, Dauchy S, et al: Antidepressants for the treatment of depression in people with cancer. *Cochrane Database Syst Rev* 6:CD011006, 2015
51. Riblet N, Larson R, Watts BV, et al: Reevaluating the role of antidepressants in cancer-related depression: A systematic review and meta-analysis. *Gen Hosp Psychiatry* 36:466-473, 2014
52. Laoutidis ZG, Mathiak K: Antidepressants in the treatment of depression/depressive symptoms in cancer patients: A systematic review and meta-analysis. *BMC Psychiatry* 13:140, 2013
53. Ng CG, Boks MP, Zainal NZ, et al: The prevalence and pharmacotherapy of depression in cancer patients. *J Affect Disord* 131:1-7, 2011
54. Rodin G, Lloyd N, Katz M, et al: The treatment of depression in cancer patients: A systematic review. *Support Care Cancer* 15:123-136, 2007
55. Carlson LE: Screening alone is not enough: The importance of appropriate triage, referral, and evidence-based treatment of distress and common problems. *J Clin Oncol* 31:3616-3617, 2013
56. National Cancer Institute: General information about depression. 2014. <http://www.cancer.gov/cancertopics/pdq/supportivecare/depression/Patient>
57. Cuijpers P, van Straten A, van Oppen P, et al: Are psychological and pharmacologic interventions equally effective in the treatment of adult depressive disorders? A meta-analysis of comparative studies. *J Clin Psychiatry* 69:1675-1685, 2008

58. Fournier JC, DeRubeis RJ, Hollon SD, et al: Antidepressant drug effects and depression severity: A patient-level meta-analysis. *JAMA* 303:47-53, 2010
59. Cuijpers P, Dekker J, Hollon SD, et al: Adding psychotherapy to pharmacotherapy in the treatment of depressive disorders in adults: A meta-analysis. *J Clin Psychiatry* 70:1219-1229, 2009
60. Desplenter F, Bond C, Watson M, et al: Incidence and drug treatment of emotional distress after cancer diagnosis: A matched primary care case-control study. *Br J Cancer* 107:1644-1651, 2012
61. Ng CG, Boks MP, Smeets HM, et al: Prescription patterns for psychotropic drugs in cancer patients: A large population study in the Netherlands. *Psychooncology* 22:762-767, 2013
62. Fisher WI, Johnson AK, Elkins GR, et al: Risk factors, pathophysiology, and treatment of hot flashes in cancer. *CA Cancer J Clin* 63:167-192, 2013
63. Bennett MI: Effectiveness of antiepileptic or antidepressant drugs when added to opioids for cancer pain: Systematic review. *Palliat Med* 25:553-559, 2011
64. Azoulay L, Dell'Aniello S, Huiart L, et al: Concurrent use of tamoxifen with CYP2D6 inhibitors and the risk of breast cancer recurrence. *Breast Cancer Res Treat* 126:695-703, 2011
65. Haque R, Shi J, Schottinger JE, et al: Tamoxifen and antidepressant drug interaction in a cohort of 16,887 breast cancer survivors. *J Natl Cancer Inst* 108(3), 2015
66. Irvin WJ Jr, Walko CM, Weck KE, et al: Genotype-guided tamoxifen dosing increases active metabolite exposure in women with reduced CYP2D6 metabolism: A multicenter study. *J Clin Oncol* 29:3232-3239, 2011
67. Coyne JC, Lepore SJ, Palmer SC: Efficacy of psychosocial interventions in cancer care: Evidence is weaker than it first looks. *Ann Behav Med* 32:104-110, 2006
68. Howell D, Keller-Olaman S, Oliver T, et al: A Pan-Canadian Practice Guideline: Screening, Assessment and Care of Psychosocial Distress (Depression, Anxiety) in Adults with Cancer. Toronto: Canadian Partnership Against Cancer (Cancer Journey Action Group) and the Canadian Association of Psychosocial Oncology, 2010. http://www.capo.ca/pdf/ENGLISH_Depression_Anxiety_Guidelines_for_Posting_Sept2011.pdf
69. Semple D, Smyth R: *Oxford Handbook of Psychiatry* (ed 3). Oxford, United Kingdom, Oxford University Press, 2013
70. International Psycho-Oncology Society: Multilingual Core Curriculum in Psycho-oncology. <http://ipos-society.org/publications/multilingual-core-curriculum-in-psycho-oncology/>
71. Rodin G, Mackay JA, Zimmerman B, et al: Provider-Patient Communication: A Report of Evidence-Based Recommendations to Guide Practice in Cancer. Evidence-Based Series #19-2. Cancer Care Ontario, 2008
72. Oncotalk: Improving Oncologists' Communication Skills. <http://depts.washington.edu/oncotalk/>
73. Park EM, Raddin RS, Nelson KM, et al: Conducting an antidepressant clinical trial in oncology: Challenges and strategies to address them. *Gen Hosp Psychiatry* 36:474-476, 2014

AUTHORS' DISCLOSURES OF POTENTIAL CONFLICTS OF INTEREST**Management of Depression in Patients With Cancer: A Clinical Practice Guideline**

The following represents disclosure information provided by authors of this manuscript. All relationships are considered compensated. Relationships are self-held unless noted. I = Immediate Family Member, Inst = My Institution. Relationships may not relate to the subject matter of this manuscript. For more information about ASCO's conflict of interest policy, please refer to www.asco.org/rwc or jop.ascopubs.org/site/misc/ifc.xhtml.

Madeline Li

No relationship to disclose

Erin B. Kennedy

No relationship to disclose

Nelson Byrne

Employment: Private practice in psychological interventions for patients with cancer

Caroline Gérin-Lajoie

No relationship to disclose

Mark R. Katz

Consulting or Advisory Role: Lundbeck, Pfizer, Sunovion Pharmaceuticals, Eli Lilly, Janssen, Shire, Bristol-Myers Squibb

Speakers' Bureau: Lundbeck, Pfizer, Sunovion Pharmaceuticals, Eli Lilly, Janssen, Shire

Homa Keshavarz

No relationship to disclose

Scott Sellick

No relationship to disclose

Esther Green

No relationship to disclose